

PLANT  
CLOSED

EVERYTHING  
MUST SELL!

# Webcast Auction

## QUALTECH INDUSTRIES, INC.

LATE MODEL OKUMA MULTI-AXIS TURNING, TSUGAMI SWISS LATHES & CNC MACHINERY

311 INDUSTRIAL DRIVE - KINGS MOUNTAIN, NC 28086

TUESDAY, MARCH 26TH @ 10:00 A.M. EDT



Inspection:  
Monday,  
March 25th  
From 8:00 A.M.  
- 4:00 P.M. EDT

<  
OKUMA VTM-  
120YB 5-AXIS CNC  
VERTICAL TURNING  
CENTER

>  
HEXAGON GLOBAL  
PERFORMANCE  
12.15.10 CNC  
COORDINATE  
MEASURING  
MACHINE



OKUMA LB-3000EXII SPACETURN 5-AXIS DUAL SPINDLE CNC TURNING CENTER



TSUGAMI SS327-III 5AX 7-AXIS CNC SWISS LATHE



# Asset Sales, Inc.

Corporate Headquarters

163 Associates Lane

Indian Trail, NC 28079

Toll Free 888.800.4442 704.821.4315 Fax 704.821.4325

www.asset-sales.com info@asset-sales.com

European Headquarters  
6 Hill End Close, Norwood Green  
Halifax, West Yorkshire, HX3 8RH  
Tel / Fax 07836.347880  
peterami@asset-sales.co.uk

In Conjunction with



# BidSpotter





## CNC VERTICAL TURNING CENTERS, MILLING & 5-AXIS

**OKUMA VTM-120YB 5-Axis CNC Vertical Turning Center** with B-Axis Articulating Head and Y-Axis Milling, Approx. 63" Swing, 40" 3-Jaw Chuck, CAT50 Big Plus Spindle Speeds to 600 RPM, Milling Speeds to 4,000 RPM, Approx. 50" X-Axis Travel, 48.8" Y-Axis, 42.5" Z-Axis, Upgraded 60 Position ATC, High Pressure Through-Spindle Coolant, Chip Conveyor, **FANUC** Series 18i-TB CNC Control, sn:12077, mfg.2008, LOW HOURS: Approx. 2,404 Cutting Hours

**OKUMA VTM-100 CNC Vertical Turning Center** with Live Milling, Approx. 40" Swing, 20" 3-Jaw Chuck, CAT50 Big Plus Spindle Speeds to 1,250 RPM, Milling Speeds to 4,000 RPM, Approx. 25.6" X-Axis Travel, 33.07" Z-Axis, Upgraded 60 Position ATC, **OKUMA** OSP-P200L CNC Control, sn:153022, mfg.2011, LOW HOURS: Approx. 12,227 Cutting Hours

**HONOR SEIKI VL-125CM CNC Vertical Turning Lathe** with Live Milling, Approx. 63" Swing, 48" 4-Jaw Chuck, CAT50 Spindle Speeds to 300 RPM, Live Spindle Speeds to 2,250 RPM, Approx. 46" X-Axis Travel, 66.5" Z-Axis, 31.5" W-Axis, 16 Position ATC, Chip Conveyor, **FANUC** 18i-TB CNC Control, sn:78498, mfg.2011, LOW HOURS: Approx. 2,920 Cutting Hours



**OKUMA VTM-120YB 5-AXIS CNC VERTICAL TURNING CENTER**



**HONOR SEIKI VL-125CM CNC VERTICAL TURNING LATHE**



**OKUMA VTM-100 CNC VERTICAL TURNING CENTER**







**OKUMA LB-3000EXII SPACETURN 5-AXIS DUAL SPINDLE CNC TURNING CENTER**



**MORI SEIKI SL-150S DUAL SPINDLE CNC TURNING CENTER**



**TSUGAMI SS327-III 5AX 7-AXIS CNC SWISS LATHE**



**TSUGAMI B0206-III 6-AXIS CNC SWISS LATHE**

## 5-AXIS & CNC HORIZONTAL TURNING CENTERS

**OKUMA LB-3000EXII** Spaceturn 5-Axis Dual Spindle CNC Turning Center with Live Milling, Collet Chucks, Approx. 13" Swing x 30" Between Chucks, Main Spindle Speeds to 4,200 RPM, Sub Spindle Speeds to 6,000 RPM, Live Milling Speeds to 6,000 RPM, 4" Spindle Bore, Sub Spindle, 12 Position Turret, Chip Conveyor, Parts Catcher, **OKUMA OSP-P300L** CNC Control, sn:172382, mfg. 2013

**MORI SEIKI SL-150S** Dual Spindle CNC Turning Center with Collet Chucks, Approx. 8" Swing x 24.8" Center Distance, Spindle Speeds to 5,000 RPM, Sub Spindle, Chip Conveyor, **MORI SEIKI MSC-518** CNC Control, sn:572

**MORI SEIKI SL-35MC** CNC Turning Center with Live Milling, 15" 3-Jaw Chuck, Approx. 16" Swing x 59" Center Distance, Spindle Speeds to 2,500 RPM, Live Milling Speeds to 2,000 RPM, 12 Position Turret, SMW Hydraulic Steady Rest, Tailstock, Chip Conveyor, **MORI SEIKI MF-T4** CNC Control, sn:108

## TSUGAMI CNC SWISS SCREW MACHINES

**TSUGAMI SS327-III** 5AX 7-Axis CNC Swiss Lathe with 32mm Capacity, Guide Bushing & 38mm (1.5") Chucker Mode Capacity, Fully Programmable 5th Axis Milling Head, Live Milling on Main & Back Spindles, High Pressure Oil, Fire Suppression Systems, **EDGE FMB Turbo 3-38** Bar Feeder (May Be Sold Separately), Chip Conveyor, **FANUC 31i-Model B5** CNC Control, sn:10111A, mfg. 2020, LOW HOURS: Approx. 2,094 Cutting Hours

**TSUGAMI B0206-III** 6-Axis CNC Swiss Lathe with 20mm Guide Bushing & 25mm (1") Chucker Mode Capacity, Live Milling on Main & Back Spindles, Fire Suppression System, Chip Conveyor, **EDGE Minuteman 320 SE** Bar Feeder (May Be Sold Separately), **FANUC 32i-Model B** CNC Control, sn:22708B8, mfg 2020, LOW HOURS: Approx. 1,402 Cutting Hours

## CNC VERTICAL & HORIZONTAL MACHINING CENTERS

**MORI SEIKI MV-65** CNC Vertical Machining Center with 22.5" x 66.75" Table, CAT50 Spindle Speed to 4,000 RPM, Approx. 60" X-Axis Travel, 27" Y-Axis, 31" Z-Axis, 30 Position ATC, **MORI M6F** CNC Control with RPG, sn:882

(2) **MORI SEIKI SH50** CNC Horizontal Machining Centers with (2) 19.7" x 19.7" Pallets, CAT40 Spindle Speeds to 12,000 RPM, Approx. 24.8" X-Axis Travel, 23.6" Y-Axis, 25.6" Z-Axis, **MORI MSC-516** CNC Controls, sn:579 • sn:535 (#535 - Buyer Inspect, May Need Repair)

**TOYODA FA550II** CNC Horizontal Machining Center with (2) 21.6" Pallets, CAT50 Spindle Speeds to 6,000 RPM, Approx. 29.5" X-Axis Travel, 29.5" Y-Axis, 23.59 Z-Axis, Chip Conveyor, **FANUC Series 15-M** CNC Controls, sn:NM8249

**Want to Sell Your Shop or Know Someone Who Does? Call Us Toll Free at (888) 800-4442! We Pay Great Finder's Fees!**





**MORI SEIKI MV-65 CNC VERTICAL MACHINING CENTER**



**TOYODA FA550II CNC HORIZONTAL MACHINING CENTER**



**(2) AMADA HFA-330 AUTOMATIC HORIZONTAL BAND SAW**



**MARVEL 8-MARK-II TILT FRAME AUTOMATIC VERTICAL BAND SAW**



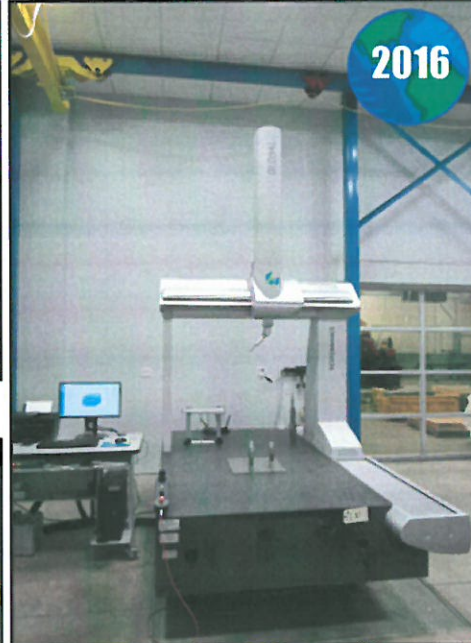
**HEXAGON GLOBAL PERFORMANCE 12.15.10 CNC COORDINATE MEASURING MACHINE**



**ASSORTED 2, 5 & 7.5 TON CRANES**



**JLG COMMANDER SIZZOR LIFT**



**(2) TOYOTA 5,800 & 6,600LB LP FORKLIFTS**



## VERTICAL & HORIZONTAL BAND SAWS & GENERAL MACHINING

**MARVEL 8-MARK-II Tilt Frame Automatic Vertical Band Saw with Miter Cutting, 18" x 12.75" (45 Degree) to 18" x 22" (0 Degree) Rectangular Capacity, 12.75" (45 Degree) to 18" (0 Degree) Round Capacity, 20" Quick Action Vise, 1" Blade, 5HP Blade Motor, Front Operated PLC Control, Variable Speed, sn:825637-W**

**MARVEL 8-MARK-I Tilt Frame Vertical Band Saw with Miter Cutting, 18" x 12.5" (45 Degree) to 18" x 20" (0 Degree) Capacity, Manual Vise, 1" Blade, Push Button Control, sn:33030134 • sn: 33030163**

**(2) AMADA HFA-330 Automatic Horizontal Band Saw with 12" x 12" Capacity, Auto Bar Feed, Hydraulic Vise, AMADA PLC Control, sn:33030134 • sn: 33030163**

**LEBLOND MAKINO Regal 18" x 49" Engine Lathe with 10" 4-Jaw Chuck, Spindle Speeds to 1,800 RPM, 2.25" Bore, Inch / Metric Threading, Tailstock, Push Button Controls, sn:15C-976**

**HARIG 612 Surface Grinder with 6" x 12" Magnetic Chuck, ANILAM DRO, sn:18107**

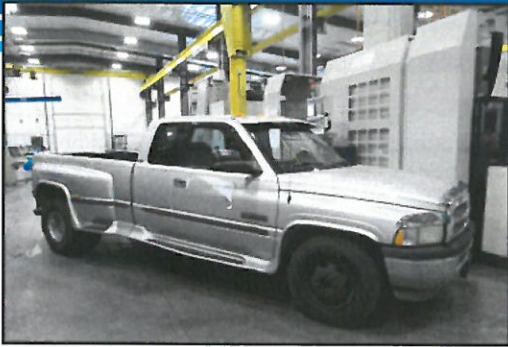
**BRIDGEPORT Series 1 Vertical Knee Mill with 9" x 32" Table, Variable Speeds to 4,200 RPM, sn:100297**

## CMM & QUALITY CONTROL

**HEXAGON GLOBAL PERFORMANCE 12.15.10 CNC Coordinate Measuring Machine with 55" x 75" Granite Table, PC-DMIS Software, Rotating Probe Head with HH-AS8-T2.5 Probehead & LSP-X1H Probe, Pendant Control, Custom Double Thickness Granite for Heavier Weight Parts, sn:1216-6428 UA, mfg.2016**

**COMPLETE QUALITY CONTROL DEPARTMENT including Granite Surface Plates, MITUTOYO & STARRETT Gauges, Gauge Block & Pin Gauge Sets, Digital & Vernier Micrometers & Calipers, Precision Levels, etc.**





**DODGE RAM 3500 DUAL AXEL PICK UP TRUCK**



**KRAFTSMAN GG 25' X 8' DUAL AXEL TRAILER**



**BRODERSON 8,000LB CAPACITY CRANE TRUCK**



**ATLAS COPCO 30 HP ROTARY SCREW AIR COMPRESSOR**

## ROLLING STOCK, BRIDGE CRANES & PLANT SUPPORT

**TOYOTA 42GFGU30** 6,600 lb. Capacity LP Forklift with Side Shift, 42" Forks, Headlights, Safety Light, Indoor Tires, 7,420hrs, sn:60975

**TOYOTA 8FGU30** 5,800 lb. Capacity LP Forklift with Side Shift, 60" Forks, 3-Stage Mast, Headlights, Safety Light, Outdoor Tires, 5,389hrs, sn:60905

**JLG Commander Sizzor CM-2546** 25' Scissor Lift with 750lb. Capacity, sn:0200018584, mfg.1995

**DODGE RAM 3500 Dual Axel Pick Up Truck** with 8' x 4' Bed, Cummings 24 Valve Turbo Diesel, Leather Interior, Radio, Heat & Air, 283,192 ODO, VIN:1B7MC33641J558147, mfg.2000

**DODGE 3500 Gooseneck Flatbed Truck** with 8'8" x 8' Bed, Dual Rear Tires, Aluminum Deck, VIN:\_\_\_\_\_

**BRODERSON IC802D** 8,000 lb. Capacity Crane Truck with 40' Reach Boom, 4 Outriggers, 70 Degree Capacity, Outdoor Tires, 1120 Hours, sn:162405

**KRAFTSMAN GG 25' x 8'** with Oak Deck Trailer with Dual Axel, 17,000lb Capacity, VIN:5E7GG2525HR003713

**ENGINEERED SYSTEMS 2, 5 & 7.5 Ton** Top Running Overhead Bridge Crane System with Approx. 35' Span, Approx. 15' Under Hook, No Rails, Pendant Controls

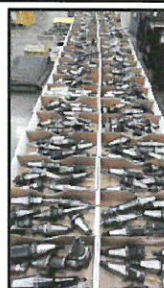
**(2) ENGINEERED SYSTEMS 7.5-Ton** Double Girder Over Head Crane System with (2) Shaw(Box 7.5 Ton Electric Hoist, Pendant, Approx. 35' Span, sn:SB1016 (Disassembled)

**COFFING 2-Ton Underslung Overhead Bridge Crane (NO RAILS)** with Approx. 12' Span, Approx. 10' Under Hook, Pendant Controls

**LARGE ASSORTMENT** of 1/2 to 2 Ton Jib Cranes

**ATLAS COPCO GA22** 30 HP Rotary Screw Air Compressor, sn:TJF40177, mfg.2018

**HUGE ASSORTMENT** of Plant Support Equipment & Tooling Including KURT & Other Vises, Large Selection of **VIDMAR** & **LISTA** Style Cabinets, **LNS** & **EDGE** Bar Feeders, Tool Racks, Work Benches, Square D Bus Bar, **KAISER** & **PARLEC** Tooling, **BIG KAISER** 50 Taper Tool Holders, CAT50 & CAT40 Tool Holders, Live & Static Lathe Tooling, Carbide & Other Perishable Tooling, Dual Axle & 5th Wheel Trailers, MP 1000 PSI HPTSC Units mfg.2012, SFX-M16R Tap Arm, Dump Hoppers, Collets, Dock Plates, Shipping Containers, Shelving, Cantilever Racks, & MUCH MORE!



**Asset Sales, Inc. Does Not Pack, Ship, Crate, Transport or Rig Items. Buyers May Pick Up Their Items at the Auction Location or Can Arrange for a Third Party Logistics Firm to Manage the Removal Process for Them.**





# Asset Sales, Inc.

Corporate Headquarters

163 Associates Lane  
Indian Trail, North Carolina 28079

Toll Free: 888.800.4442 Direct: 704.821.4315

Fax: 704.821.4325 – [www.asset-sales.com](http://www.asset-sales.com)

Asset Sales Inc. • Lance Mannion – North Carolina License #6003 & 6625



Presorted  
First Class Mail  
U.S. Postage  
PAID  
Eugene, Oregon  
Permit No. 17



**OKUMA LB-3000EXII SPACETURN 5-AXIS DUAL SPINDLE  
CNC TURNING CENTER**

## ABBREVIATED TERMS & CONDITIONS OF AUCTION

**YOUR PARTICIPATION AND BIDDING ARE CONSIDERED A LEGALLY BINDING CONTRACT – IT IS PROHIBITED TO BID ON ANY ITEM THAT YOU CANNOT PAY FOR IN FULL BY THE SPECIFIED DATE OR REMOVE BY DESIGNATED DATE.**

Subject to amendments and modifications announced by Asset Sales, Inc. and Bidspotter at the time of the auction, any person participating in the webcast auction will be bound by the following terms and conditions. Neither Asset Sales, Inc. nor Bidspotter warrant the accuracy, authenticity, description, weight, count or measure of any listings specified herein.

All articles will be sold to the highest webcast bidder conforming to the bid process in accordance to the AUCTION COMPANY'S TERMS & CONDITIONS – COMPLETE COPIES AVAILABLE AT [WWW.ASSET-SALES.COM](http://WWW.ASSET-SALES.COM). No article shall be removed unless paid in full and all articles purchased shall be removed in the time allocated by Asset Sales, Inc.. No item, no matter how small or how far the purchaser has to travel, may be removed until after the online auction is completely closed.

All payments shall be by wire transfer, cashiers check, cash or a company check with a bank letter of guarantee. All bidding and invoicing will be in US Dollars (\$).

All bidders are responsible for all applicable taxes, in addition a 18% Buyer's Premium is implemented for all online sales.

Rigging/ Removal of sold equipment is the sole responsibility of the buyer and must be completed by the posted date. Rigging/Removal may not begin until payment has been made in full and the auction sale is complete. All heavy rigging will require a certificate of insurance for \$1,000,000.00 naming Asset Sales, Inc. as the insured.

ALL ONLINE SALES ARE FINAL, ON AN "AS IS – WHERE IS," "IN PLACE," "WITH ALL FAULTS" BASIS.

### REGISTRATION & BIDDING ONLINE:

When participating as a buyer via Bidspotter.com, you must be pre-approved by Asset Sales, Inc. The pre-approval process is easy, but necessary. Asset Sales, Inc. will verify telephone number and confirm agreement to the Terms and Conditions.

**ANYONE OUTSIDE OF THE CONTINENTAL UNITED STATES WILL BE REQUIRED TO WIRE TRANSFER A MINIMUM DEPOSIT OF \$5000 TO BE APPROVED.**

# WEBCAST AUCTION

## QUALTECH INDUSTRIES, INC.

LATE MODEL OKUMA MULTI-AXIS TURNING, TSUGAMI SWISS LATHES & CNC MACHINERY  
KINGS MOUNTAIN, NC

**TUESDAY, MARCH 26TH @ 10:00 A.M. EDT**